

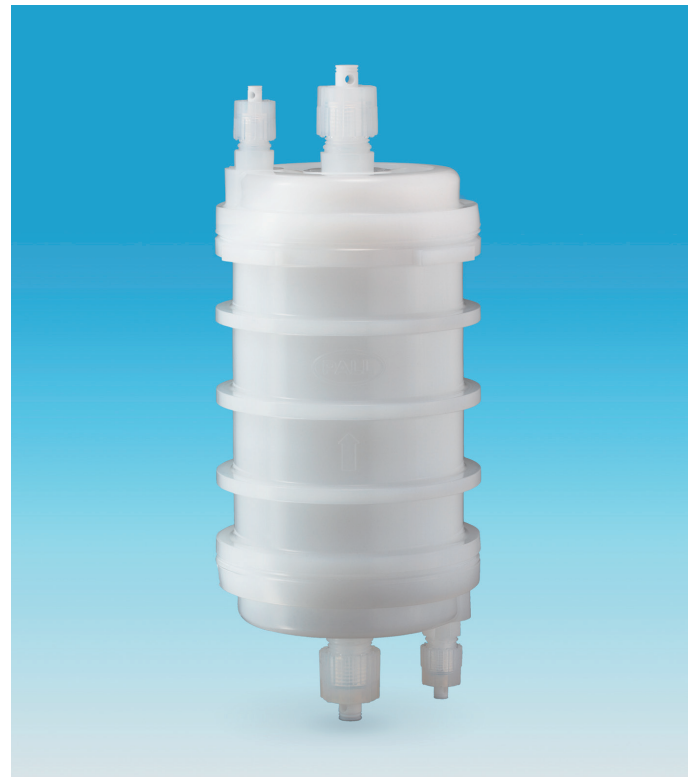
Description

The Pall XpressKleen KC disposable assembly uses a new generation of surface modified and patent pending PTFE membrane designed for leading edge critical chemical processes.

The XpressKleen KC filter provides control of critical size particles and maintains purity of critical fluids with a product guarantee of total metal ion extractables. The XpressKleen filter's surface cleanliness includes removal of organic contamination and surface particles. This makes the filter suitable for use in point of use (POU) and at the point of process (POP) to help fabs define a contamination control system that delivers the required fluid purity to the wafer.

Pall delivers consistent filter purity through its completely integrated and advanced manufacturing capability that extends from the PTFE resin to the finished filter device. Filter cleanliness reduces process downtime and delivers fast qualification following filter change.

The XpressKleen KC assembly is a completely disposable filter unit designed for critical single pass use.



Features & Benefits

- Low extractables
- > 40nm particle rinse up control in UPW¹
- TOC control
- 100% prewetted with ultrapure water in package
- Medium size designed KC assembly for POU retention
- Disposable filter unit with filter cartridge integrally sealed in housing
- Sealed assembly for safer handling and faster change-out
- 100% integrity tested

¹ > 20 nm particle rinse up control in UPW for 5 nm grade

Removal Ratings and Operating Conditions

Removal Ratings	5 nm	10 nm	12 nm	15 nm	30 nm
Media Code	XP5	XP10	XP12	XP15	XP30
Filter Area	0.65 m ² / 7.0 ft ²	0.85 m ² / 9.1 ft ²	0.67 m ² / 7.2 ft ²	0.9 m ² / 9.7 ft ²	0.45 m ² / 4.8 ft ²
Metal Extractables	< 1 ppb ⁴	< 1 ppb ³	< 3 ppb ³		
Flow	In-line				
Maximum Operating Temperature	185 °C / 365 °F				

Maximum Operating Pressure	0.49 MPaG @ 25 °C / 77 °F
	0.39 MPaG @ 60 °C / 140 °F
	0.34 MPaG @ 90 °C / 194 °F
	0.20 MPaG @ 120 °C / 248 °F
	0.15 MPaG @ 150 °C / 302 °F
	0.12 MPaG @ 185 °C / 365 °F

³ Total metal concentrations in 13 elements: Li, Na, Mg, Al, K, Ca, Cr, Mn, Fe, Ni, Cu, Zn, Pb.

⁴ Total metal concentrations in 19 elements: Al, Ba, B, K, Na, Fe, Li, Mg, Mn, Pb, Sn, Ti, Zn, Ni, Cu, Cr, Co, Ca, Ag.

Specifications

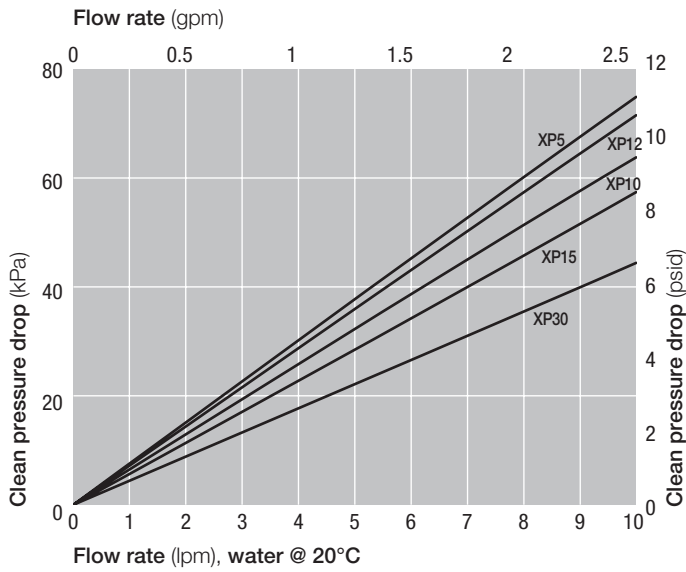
Materials of Construction

Parts	Material ²
Filter Medium	Surface-modified PTFE
Media Support	PTFE / PFA
Core, cage and end caps	PFA
Housing	PFA

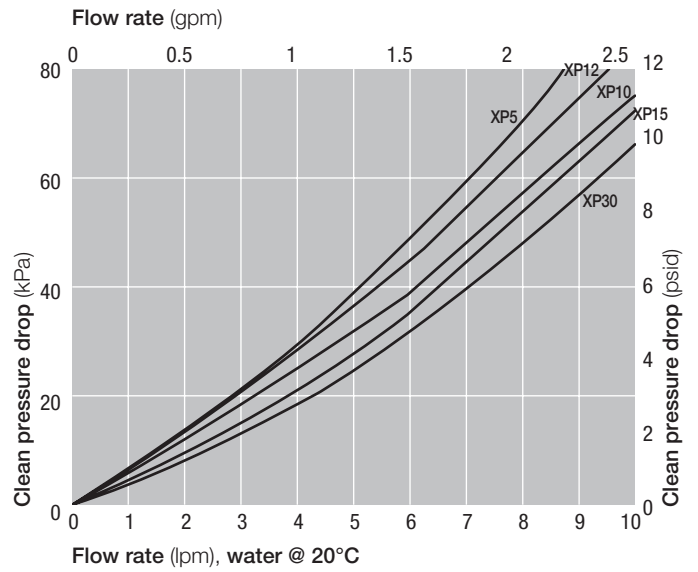
² All fluoropolymer materials made without PFOA

Typical Flow Characteristics - 1cP fluid, 20 °C

In-line KC (1/2 in)



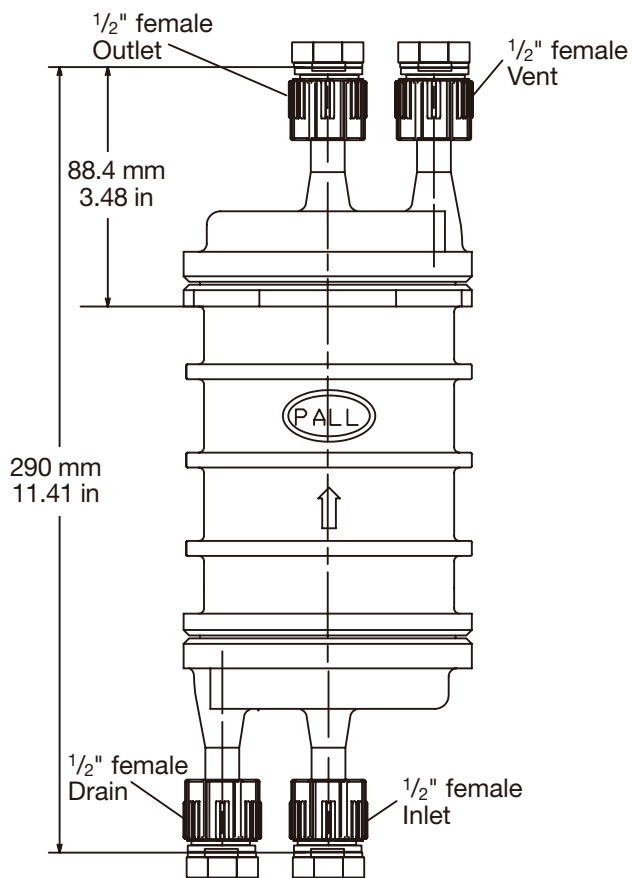
In-line KC (3/8 in)



Nominal Dimensions

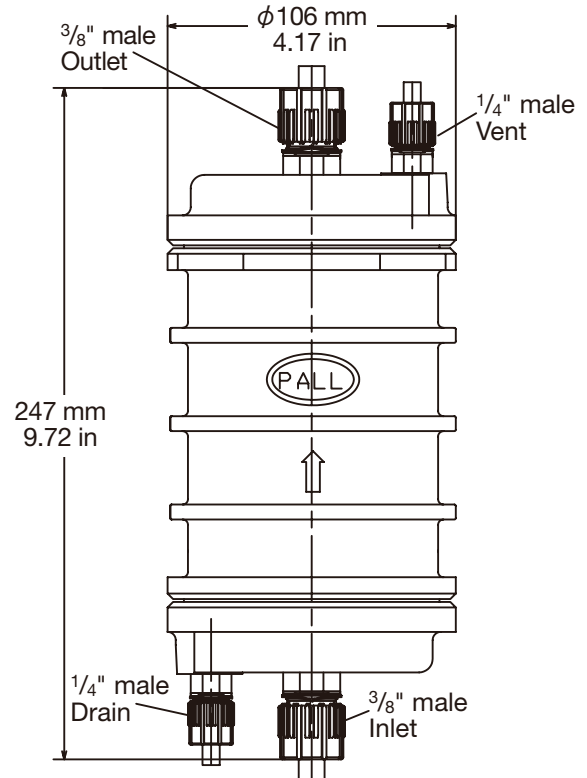
Super Pillar⁵ 300 P series

1/2" female fitting



LDFN05_09E71 / 72

3/8" male fitting



LDFN05_64E71

⁵ Super Pillar is a trademark of Nippon Pillar Packing Co., Ltd.

Part Numbers / Ordering Information⁶

LDFN05XP 1 2 E 3

Table 1

Code	Removal Ratings
5	5 nm
10	10 nm
12	12 nm
15	15 nm
30	30 nm

Table 2

Code	Inlet / Outlet	Vent / Drain
06 ⁷	3/8" in male	1/4" in male
64 ⁸	3/8" in male	1/4" in male
08	1/2" in male	1/4" in male
09	1/2" in female	1/2" in female
12	3/4" in male	1/4" in male
13	3/4" in female	1/2" in female

Table 3

Code	Removal Rating
1	20 series (Flowell) ⁹
2	Super Pillar type
51	Flare style
71	Super Pillar 300 P series
72	Super Pillar 300 P series L type
8	60 series Flowell
9	11CR series Flowell

⁶ Part numbers in combination with all codes are not always available. Please contact Pall for part number availability.

⁷ Flare style only

⁸ Super Pillar 300 P series only

⁹ Flowell is a trademark of Flowell Corporation.



Microelectronics

25 Harbor Park Drive
 Port Washington, NY 11050
 +1 516 484 3600 telephone
 +1 800 360 7255 toll free US

Nihon Pall Ltd.

6-5-1, Nishishinjuku,
 Shinjuku-ku
 Tokyo 163-1325 Japan
 +81 3 6901 5700 telephone
 +81 3 5322 2109 fax

Visit us on the Web at www.pall.com/microelectronics
 Contact us at www.pall.com/contact

Pall Corporation has offices and plants throughout the world. To locate the Pall office or distributor nearest you, visit www.pall.com/contact.

The information provided in this literature was reviewed for accuracy at the time of publication. Product data may be subject to change without notice. For current information consult your local Pall distributor or contact Pall directly.

IF APPLICABLE Please contact Pall Corporation to verify that the product conforms to your national legislation and/or regional regulatory requirements for water and food contact use.

© Copyright 2022, Pall Corporation. Pall, Kleen-Change and XpressKleen are trademarks of Pall Corporation. ® Indicates a trademark registered in the USA.