

4711 YE47 Series High Pressure Filters



DOCUMENT NUMBER

Supralon™ lube & hydraulic oil filters deliver consistent, high level fluid system protection across all applications, regardless of severity. Supralon filters feature $\text{Beta}_{X(C)} > 2000$ filter efficiency, low pressure drop and long service life.

Features

- Flows to 490 lpm (130 US gpm)
- Pressures to 450 bar (6500 psi)
- Port size: 1 1/2"

Notes and Specifications Filter Housing

Fatigue Pressure Rating: 400 bar (5800 psi) per NFPA T2.6.1 R2-2001 Cat C/90

Typical Burst Pressure: 1,600 bar (23,000 psi)

Filter Element Collapse Pressure: 207 bar (3000 psid) – 9601 series

Fluid Compatibility: Compatible with all petroleum oils and most water glycols, water-oil emulsions, and synthetic hydraulic and lubricating fluids

Temperature Range: -29°C to 120°C (-20°F to 250°F) 60°C (140°F) maximum in HWCF or water glycol

Bypass Valve Setting: Non-bypass

Indicator Pressure Setting: 7 bar (100 psid) – 4511 series

Housing Materials of

Construction: Ductile iron head; steel bowl

Element Pressure Drop

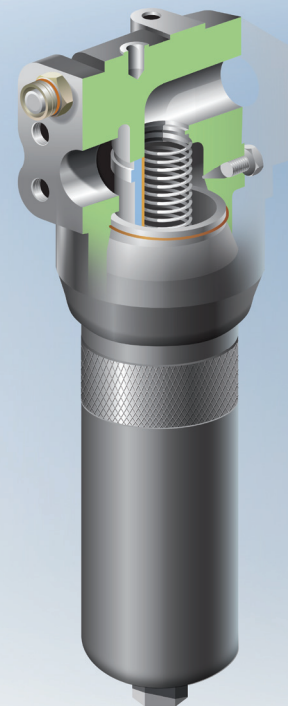
Multiply actual flow rate times factor in table below to determine pressure drop with fluid at 32 cSt (150 SUS), 0.9 S.G. Correct for other fluids by multiplying new viscosity in cSt/32 (SUS/150) x new S.G./0.9.

9601 Series Element DP Factors (psid/gpm)

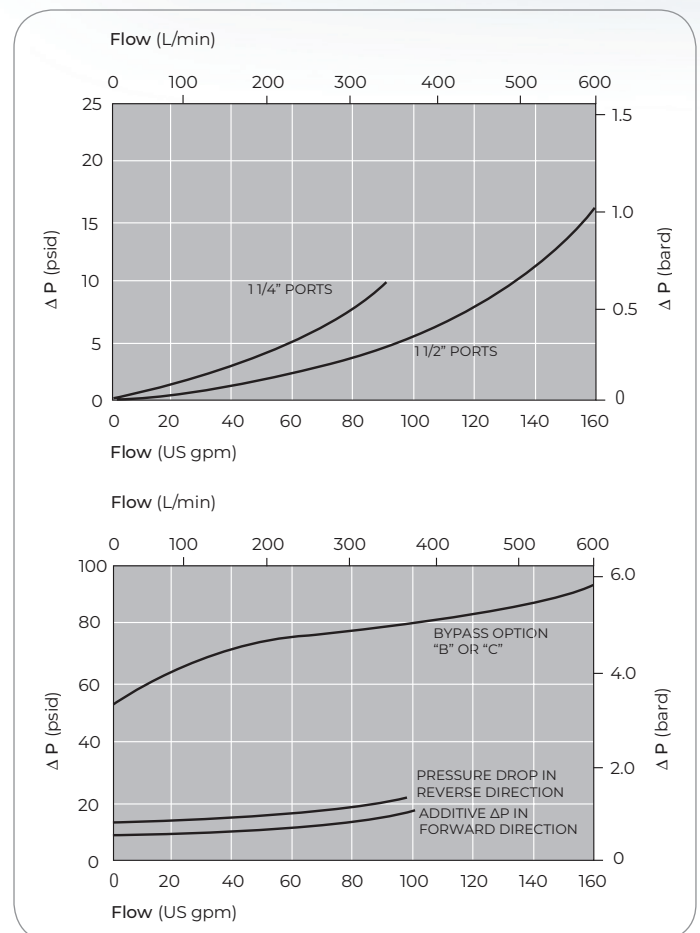
| Length | HP | HT |
|--------|------|------|
| 13" | 0.32 | 0.08 |
| 16" | 0.25 | 0.07 |

Pressure Drop Information

Housing pressure drop using fluid with 0.9 S.G.
Housing pressure drop is directly proportional to S.G.



4711 series filter housing



Housing Ordering Information

Please select from the following list of standard filter housing options

Section 1 Housing P/N:

Note: Pall filter housings are supplied without filter elements or filter change out warning devices. Never operate the filter housing unless a filter element is fitted and all warning device ports are sealed.

Housing part number designates indicator port is fitted with a plastic shipping plug.

Part Number

| | |
|--------------------|------------------|
| HZ4711A24TW9YE47 | HZ4711E24TW9YE47 |
| HZ4711A24UW9YE47 | HZ4711E24UW9YE47 |
| HZ4711C24++UW9YE47 | HZ4711G24TW9YE47 |
| HZ4711C24TW9YE47 | HZ4711G24UW9YE47 |
| HZ4711C24UW9YE47 | |

Part Number (Description) Breakdown

| | |
|-------------|---|
| HZ | Housing with fluorocarbon seals |
| 4711 | 4511 series housing |
| A24 | 1 1/2" SAE J514 straight thread port |
| C24 | 1 1/2" BSP ISO 228 threads |
| E24 | 1 1/2" Flange ports SAE J518C code 62 (414 bar/6000 psi max pressure) |
| G24 | 1 1/2" ISO 6162 split flange ports (400 bar/5800 psi max pressure) |
| T | 1" nominal length |
| U | 16" nominal length |
| W | Non-bypass |
| 9 | 1 indicator warning device port |
| YE47 | Designed for high fatigue applications |

Section 2 Element P/N:

HC9601 F 1 2 Z

Table 1: Filter Performance Ratings

| Code | $\beta_{x(c)} \geq 2000$ based on ISO 16889 |
|------|---|
| HP | 5 |
| HT | 15 |

Table 2: Length Options

| Code | Description |
|------|--------------------|
| 13 | 13" nominal length |
| 16 | 16" nominal length |

Section 3

Differential Pressure Indicator P/N:

RC 1 Z 097 Z 2

Note: If no Differential Pressure Indicator is selected, 'B' type blanking plug (P/N HC9000A104Z) must be ordered separately and fitted to replace the shipping plug.

Table 1

| Code | Brass Option Indicator |
|--------------|--|
| A218M | Electrical switch (SPDT) with Hirschmann connector |
| A218R | Electrical switch (SPDT) with Hirschmann connector with Red and Green LED indicators |
| A219D | Visual indicator |

Table 2: Stainless Steel Option Indicator

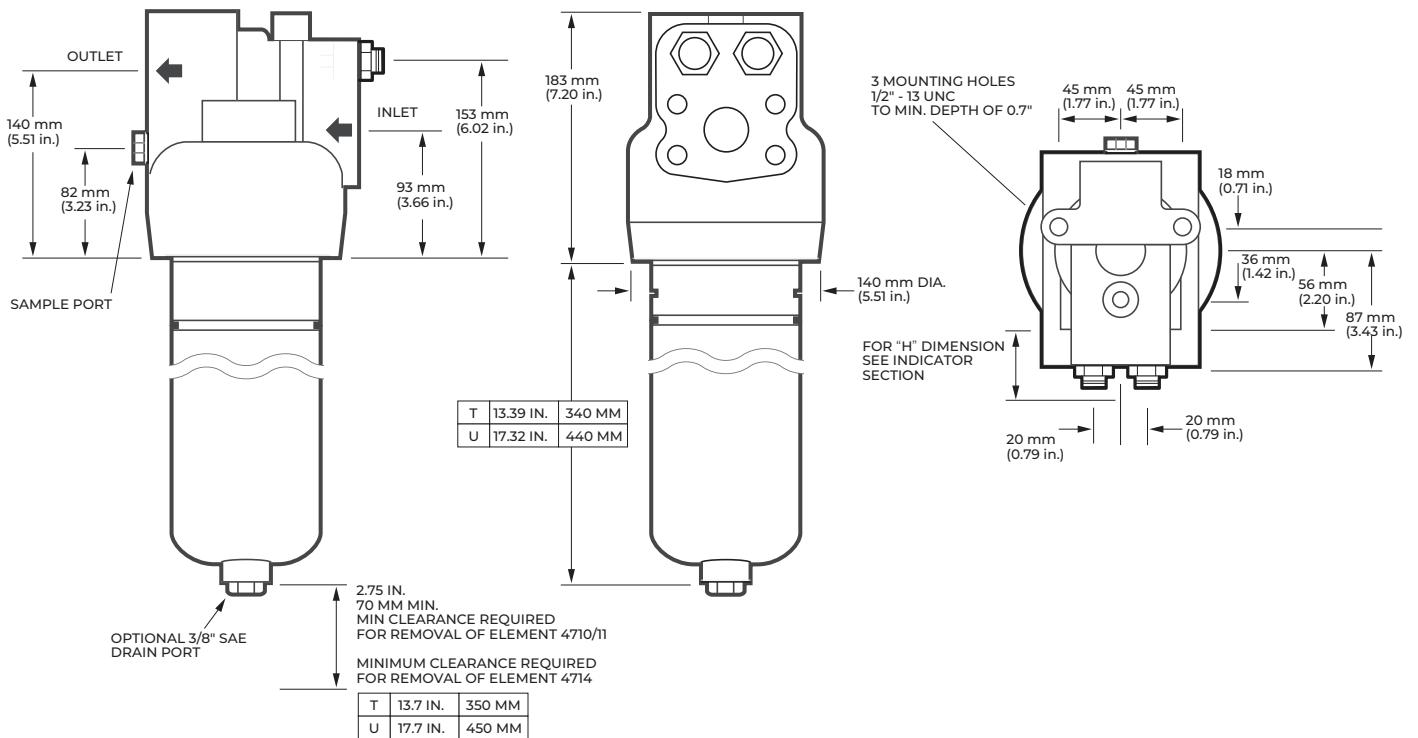
| Code | Stainless Steel Option Indicator |
|--------------|--|
| 778N | Visual filter with thermal lockout |
| 861C* | Electrical switch (SPDT) with Hirschmann connector |
| 771B | Electrical switch (SPDT) with 3-pin |

Table 2: Differential Pressure Indicator Material

| Code | Description |
|-------------|---|
| Omit | If Brass Indicator is selected in Table 1 |
| SS | If Stainless Steel Indicator is selected in Table 1 |

Note: SS indicator is required for high pressure cycle applications with pressures >200 bar (3000 psi)

Dimensional Drawings



PALL CORPORATION

Corporate Headquarters
Port Washington, NY, USA
+1-800-717-7255 toll free (USA)
+1-516-484-5400 phone

European Headquarters
Fribourg, Switzerland
+41 (0)26 350 53 00 phone


Asia-Pacific Headquarters
Singapore
+65 6389 6500 phone

Visit us on the Web at www.pall.com/industry
Contact us at www.pall.com/contact

Pall Corporation has offices and plants throughout the world. To locate the Pall office or distributor nearest you, visit www.pall.com/contact.

The information provided in this literature was reviewed for accuracy at the time of publication. Product data may be subject to change without notice. For current information consult your local Pall distributor or contact Pall directly.

IF APPLICABLE Please contact Pall Corporation to verify that the product conforms to your national legislation and/or regional regulatory requirements for water and food contact use.

© Copyright 2022, Pall Corporation. Pall,  and Supralon are trademarks of Pall Corporation.
® Indicates a trademark registered in the USA.

DOCUMENT NUMBER
January 2022