

# 7400 Series Spin-On Filters



M&E7400EN

Supralon™ lube & hydraulic oil filters deliver consistent, high level fluid system protection across all applications, regardless of severity. Supralon filters feature  $\text{Beta}_{X(C)} > 2000$  filter efficiency, low pressure drop and long service life.

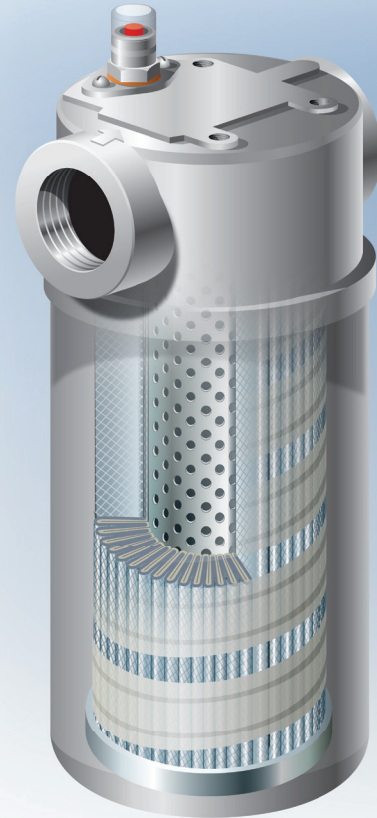
## Features

- Flows to 125 lpm (35 US gpm)
- Pressures to 17 bar (250 psi)
- Port size: 3/4" and 1"

## Notes and Specifications

### Filter Housing

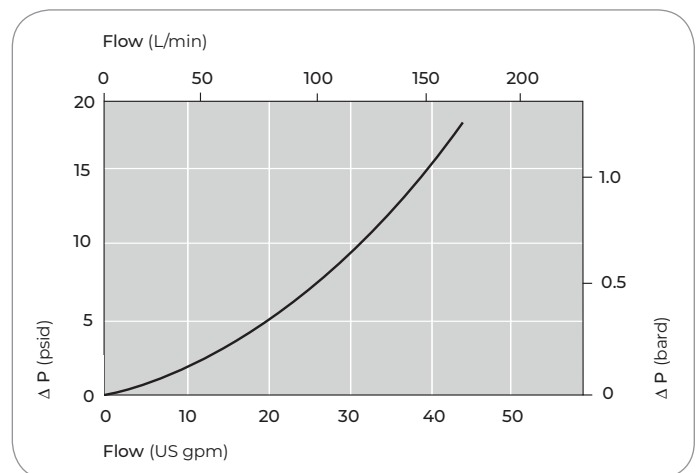
<b>Fatigue Pressure Rating:</b>	17 bar (250 psi) (60,000 cycles 0-250 psi)
<b>Typical Burst Pressure:</b>	28 bar (400 psi)
<b>Filter Element Collapse Pressure:</b>	7 bard (100 psid)
<b>Fluid Compatibility:</b>	Compatible with all petroleum oils and most water glycols, water-oil emulsions, and synthetic hydraulic and lubricating fluids
<b>Temperature Range:</b>	-29°C to 120°C (-20°F to 250°F) 60°C (140°F) maximum in HWCF or water glycol
<b>Bypass Valve Setting:</b>	1.7 bard (25 psid) 3.4 bard (50 psid) Non-bypass
<b>Indicator Pressure Setting:</b>	1.1 bard (16 psid) with 'A' valve option 2.4 bard (35 psid) with 'B' and 'W' valve option
<b>Housing Materials of Construction:</b>	Cast iron head



7400 Series Filter Housing and Spin-On Cannister

## Pressure Drop Information

**Housing pressure drop using fluid with 0.9 S.G.**  
Housing pressure drop is directly proportional to specific gravity.



## Element Pressure Drop

Multiply actual flow rate times factor in table below to determine pressure drop with fluid at 32 cSt (150 SUS), 0.9 S.G. Correct for other fluids by multiplying new viscosity in cSt/32 (SUS/150) x new S.G./0.9.

## 7400 Series Element DP Factors (psid/gpm)

Length	RZ	RP	RN	RS	RT
4"	0.82	0.36	0.30	0.22	0.15
8"	0.43	0.19	0.15	0.12	0.08

## Ordering Information

For new installations, select one complete part number from each section below

### Section 1 Housing P/N:

Note: Pall filter housings are supplied without filter elements or filter change out warning devices. Never operate the filter housing unless a filter element is fitted and all warning device ports are sealed.

Housing part number designates indicator port is fitted with a plastic shipping plug.

#### Part Number

HH7400A12B1	HH7400C12B1
HH7400A16A1	HH7400C16A1
HH7400A16B1	HH7400C16B1
HH7400A16W1	HH7400C16W1

#### Part Number (Description) Breakdown

HH	Housing with nitrile seals
7400	7400 series spin-on housing
A12	¾" SAE J514 straight thread port
A16	1" SAE J514 straight thread port
C12	¾" BSP ISO 228 threads
C16	1" BSP ISO 228 threads
A	1.7 bard (25 psid) bypass valve
B	3.4 bard (50 psid) bypass valve
W	Non-bypass
1	1 indicator warning device port

## Section 2 Element P/N:

Spin-On Can P/N: HC7400 S 1 2 H

Table 1: Filter Performance Ratings

Code	$\beta_{x(c)} \geq 2000$ based on ISO 16889	ISO Code Rating per Stress-Resistance Test (80% $\Delta p$ )*
RZ	3	06/04/00
RP	5	12/08/00
RN	7	14/09/04
RS	12	18/16/08
RT	22	19/17/12

\* based on 60 psid terminal pressure drop

Table 2: Length Options

Code	Description
4	4" nominal length
8	8" nominal length

## Section 3

### Differential Pressure Indicator P/N:

RC 1 z 2 z

Note: If no Differential Pressure Indicator is selected, 'B' type blanking plug (P/N HC9000A104Z) must be ordered separately and fitted to replace the shipping plug.

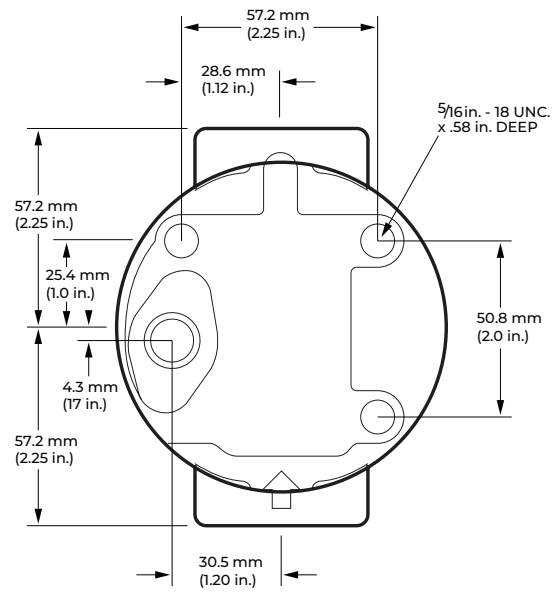
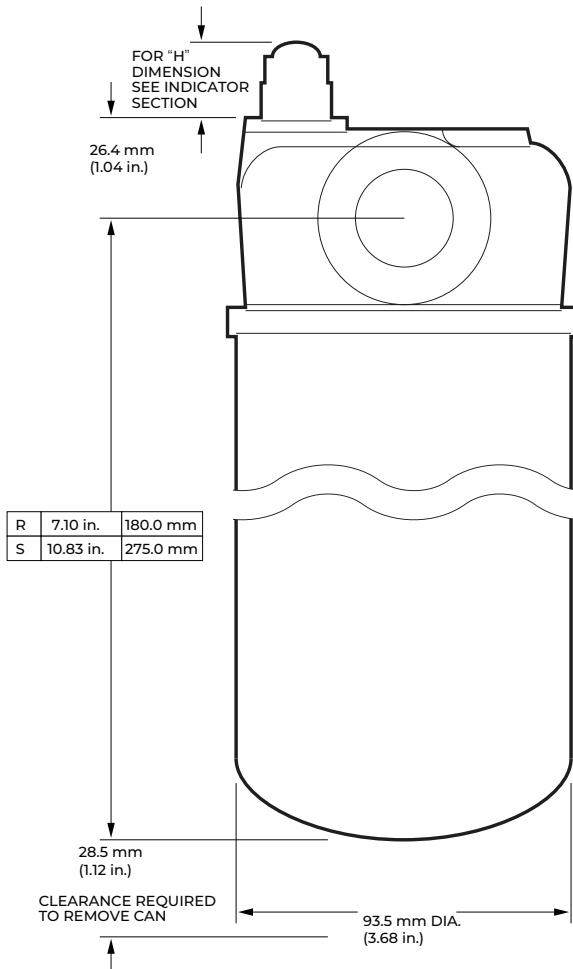
Table 1: Indicator Options

Code	Brass Option Indicator
A218M	Electrical switch (SPDT) with Hirschmann connector
A218R	Electrical switch (SPDT) with Hirschmann connector with Red and Green LED indicators
A219D	Visual indicator

Table 2: Differential Pressure Setting Options

Code	Description
084	For A valve option (1.1 bar – 16 psid)
090	For B and W valve options (2.4 bard - 35 psid)

## Dimensional Drawings



**Corporate Headquarters**  
 Port Washington, NY, USA  
 +1-800-717-7255 toll free (USA)  
 +1-516-484-5400 phone

**European Headquarters**  
 Fribourg, Switzerland  
 +41 (0)26 350 53 00 phone


**Asia-Pacific Headquarters**  
 Singapore  
 +65 6389 6500 phone

Visit us on the Web at [www.pall.com/industry](http://www.pall.com/industry)  
 Contact us at [www.pall.com/contact](http://www.pall.com/contact)

Pall Corporation has offices and plants throughout the world. To locate the Pall office or distributor nearest you, visit [www.pall.com/contact](http://www.pall.com/contact).

The information provided in this literature was reviewed for accuracy at the time of publication. Product data may be subject to change without notice. For current information consult your local Pall distributor or contact Pall directly.

*IF APPLICABLE* Please contact Pall Corporation to verify that the product conforms to your national legislation and/or regional regulatory requirements for water and food contact use.

© Copyright 2022, Pall Corporation. Pall,  and Supralon are trademarks of Pall Corporation. ® Indicates a trademark registered in the USA.