



## 9901 Series High Pressure Filters

Coralon® lube and hydraulic oil filters deliver consistent, high level fluid system protection across all applications, regardless of severity. Coralon filters feature  $\text{Beta}_{X(C)} > 1000$  filter efficiency, low pressure drop and long service life.

### Features

- Flows to 910 L/min (250 US gpm)
- Pressures to 414 bar (6000 psi)
- Port size: 2"

### Notes and Specifications

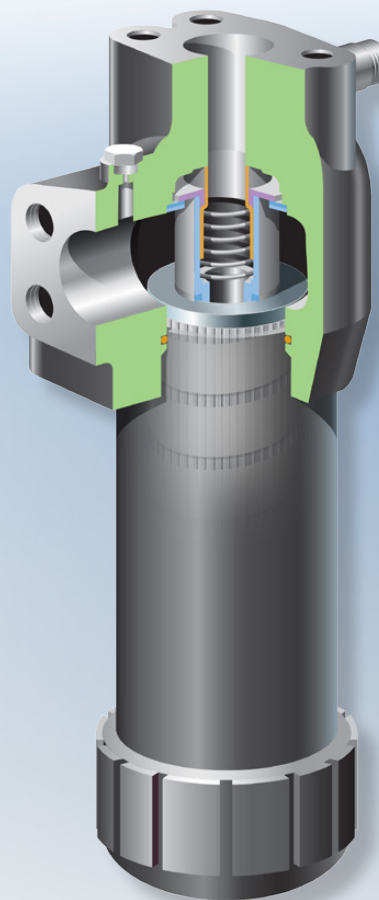
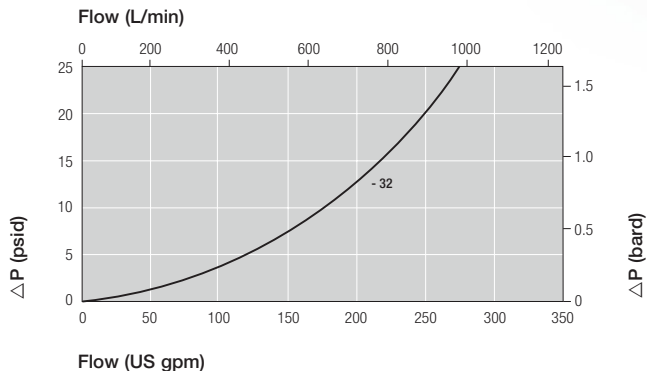
#### Filter Housing

- **Fatigue Pressure Rating**  
207 bar (3000 psi) per NFPA T2.6.1 R2-2001 Cat C/90 (1 million cycles)
- **Typical Burst Pressure:**  
1,035 bar (15,000 psi)
- **Filter Element Collapse Pressure:**  
207 bar (3000 psid)
- **Fluid Compatibility:**  
Compatible with all petroleum oils and most water glycols, water-oil emulsions, and synthetic hydraulic and lubricating fluids
- **Temperature Range:**  
-29 °C to 120 °C (-20 °F to 250 °F)  
60 °C (140 °F) maximum in HWCF or water glycols
- **Bypass Valve Setting:**  
Non-bypass
- **Indicator Pressure Setting:**  
7 bar (100 psid)
- **Housing Materials of Construction:**  
Ductile iron head and cover; steel tube

### Pressure Drop Information

#### Housing pressure drop using fluid with 0.9 S.G.

Housing pressure drop is directly proportional to specific gravity.



9901 Series Filter Housing

### Element Pressure Drop

Multiply actual flow rate times factor in table below to determine pressure drop with fluid at 32 cSt (150 SUS), 0.9 S.G. Correct for other fluids by multiplying new viscosity in cSt/32 (SUS/150) x new S.G./0.9.

#### 9901 Series Element DP Factors (psid/US gpm)

Length	CP	CS	CT
26"	0.10	0.035	0.03
39"	0.06	0.025	0.02

## Ordering Information

For new installations, select one complete part number from each section below

### Section 1 Housing P/N:

**Note:** Pall filter housings are supplied without filter elements or filter change out warning devices. Never operate the filter housing unless a filter element is fitted and all warning device ports are sealed.

Housing part number designates indicator port is fitted with a plastic shipping plug.

Part Number
HZ9901E32XW1
HZ9901E32VW1
HZ9901G32XW1
HZ9901G32VW1

#### Part Number (Description) Breakdown

HZ	= housing with fluorocarbon seals
9901	= 9901 series housing
E32	= 2" Flange ports SAE J518C code 62 (400 bar/6000 psi max pressure)
G32	= 2" ISO 6162 split flange ports (400 bar/5800 psi max pressure)
V	= 26" nominal length
X	= 39" nominal length
W	= non-bypass
1	= 1 indicator warning device port

### Section 2 Element

P/N: HC9901F  39

Table 1

Table 2

**Table 1: Filter Performance Ratings**

Code	$\beta_{X(c)} \geq 1000$ based on ISO 16889
CP	5
CS	12
CT	15

**Table 2: Seal Options**

Code	Description
Z	Fluorocarbon
H	Nitrile

### Section 3 Differential Pressure Indicator

P/N: RC  Z 090 Z

Table 3

Table 4

**Note:** If no Differential Pressure Indicator is selected, 'B' type blanking plug (P/N HC9000A104Z) must be ordered separately and fitted to replace the shipping plug.

**Note:** Z indicates fluorocarbon seals are standard. Other options are available; contact Pall.

**Table 3: Indicator Options**

Code	Brass Option Indicator
A218M	Electrical switch (SPDT) with Hirschmann connector
A218R	Electrical switch (SPDT) with Hirschmann connector with Red and Green LED indicators
A219D	Visual indicator

**Code** **Stainless Steel Option Indicator**

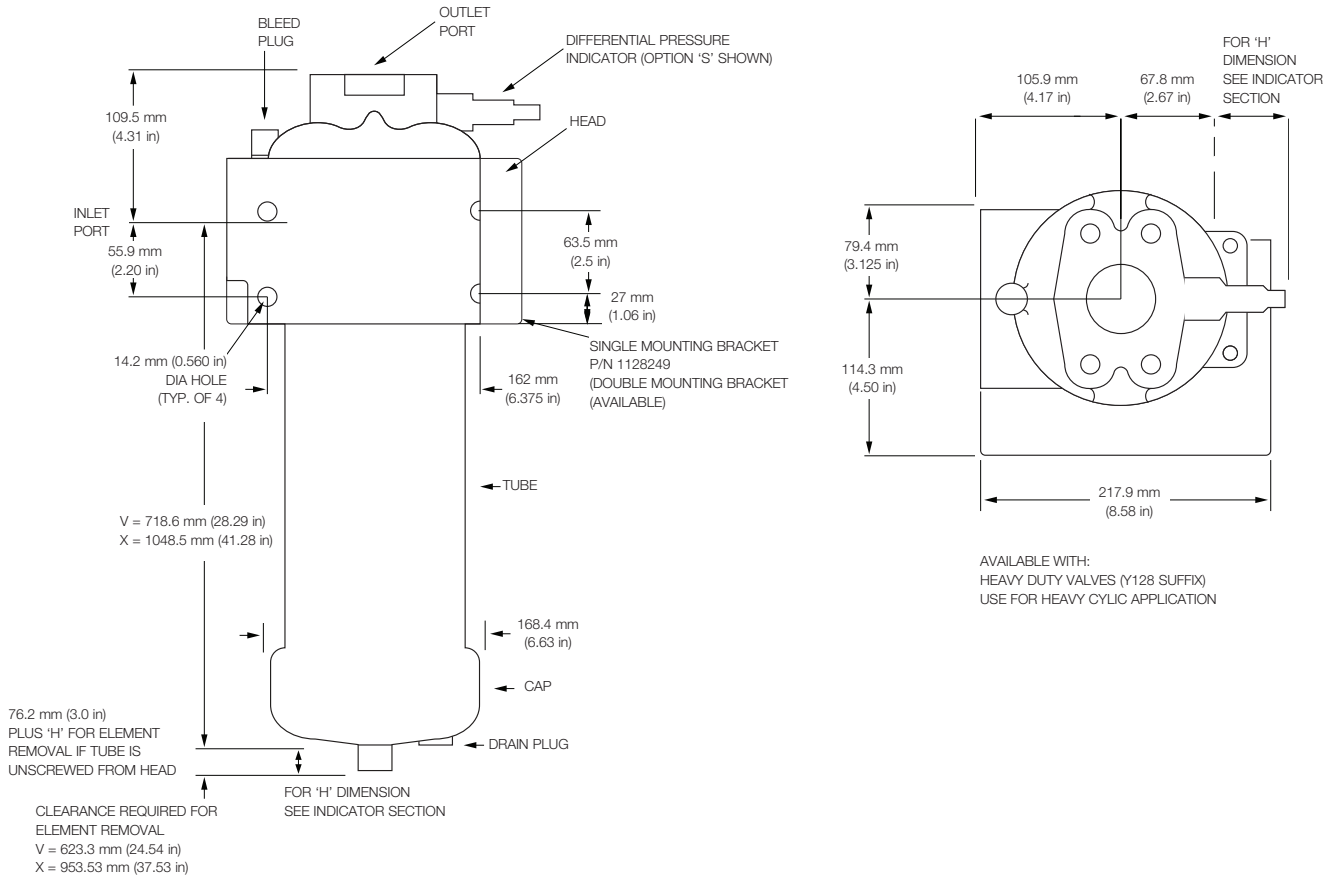
778N	Visual filter with thermal lockout
861C	Electrical switch (SPDT) with Hirschmann connector
771B	Electrical switch (SPDT) with 3-pin

**Table 4: Differential Pressure Indicator Material**

Code	Description
Omit	If Brass Indicator is selected in Table 3
SS	If Stainless Steel Indicator is selected in Table 3 (recommended for high pressure applications with pressure > 200 bar (3000 psi))

# Dimensional Drawings

Dimensions in mm (inches)



The equipment has been assessed in accordance with the guidelines laid down in The European Pressure Directive 97/23/EC and has been classified within Sound Engineering Practice S.E.P. Suitable for use with Group 1 and 2 fluids only. Consult Sales for other fluid gas group suitability.



25 Harbor Park Drive  
 Port Washington, NY 11050  
 +1 516 484 3600 telephone  
 +1 800 289 7255 toll free US

Portsmouth - UK  
 +44 (0)23 9233 8000 telephone  
 +44 (0)23 9233 8811 fax  
 www.pall.com/contact

Visit us on the Web at [www.pall.com](http://www.pall.com)

Pall Corporation has offices and plants throughout the world. For Pall representatives in your area, please go to [www.pall.com/contact](http://www.pall.com/contact)

Because of technological developments related to the products, systems, and/or services described herein, the data and procedures are subject to change without notice. Please consult your Pall representative or visit [www.pall.com](http://www.pall.com) to verify that this information remains valid.

© Copyright 2018, Pall Corporation. Pall, and Coralon are trademarks of Pall Corporation. ® Indicates a trademark registered in the USA. Better Lives. Better Planet. and Filtration. Separation. Solution.sm are service marks of Pall Corporation.

