

## NEW: Pall PCC37-XS Component Cleanliness Cabinet

For the determination of component cleanliness

The Pall PCC37-XS Cleanliness Cabinet facilitates the accurate, reliable and repeatable preparation of gravimetric membranes for the determination of component cleanliness. The PCC37-XS enables operators to access the cleanliness level of manufactured parts and components in accordance ISO18413, ISO16232 and VDA 19 procedures.

### Features

- Stainless Steel and Carbon Steel Construction
- Reliable and repeatable measurements
- HEPA filtered laminar air flow in a self contained super polished stainless steel working area
- Simple to install and operate
- Requiring only a power source
- Designed and built to Pressure Washing ISO standard 16232
- Solvent dispensing gun with fluid volume dispensing counter
- Pressurized solvent dispensing and recycling circuits
- Gravimetric membrane holder
- Auto Wall Wash function
- PLC controlled operating parameters (option)
- Ultrasonic agitation (option)

### General Specifications

- Dimensions: 1320mm W x 1450mm D x 2549mm H
- Inputs: 220V/380 50 or 60 Hz
- Working area: 696mm W x 800mm Diameter x 800mm H
- Fluorocarbon seals, BA grade SUS materials are standard
- Air flow ISO14644-123 Class 5
- Polished stainless steel extraction enclosure
- Controlled cleanliness environment (Class 5 per ISO 14644-1)
- HEPA filter rating: 0.3 µm absolute
- Control panel with colored touch screen
- Solvent filter rating: 0.2 µm absolute
- Test membrane holder in the power zone
- Noise level in working conditions: < 74 dB

### Materials of Construction:

Electrochemical Polished for both Stainless Steel Working Area and inside tube



Ultrasonic Operation in Bath

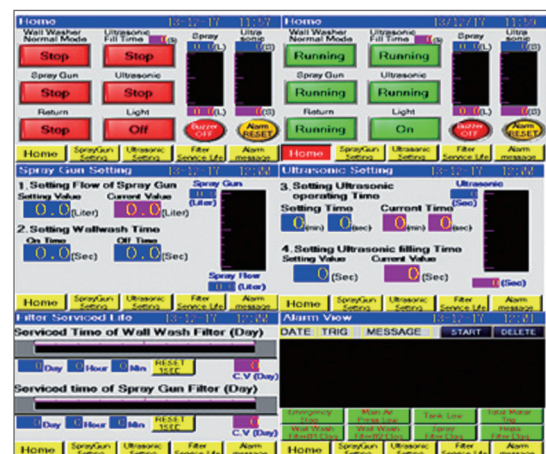
Design it  
Build it  
Keep it **CLEAN**



PCC37-XS, Pall Cleanliness Cabinet



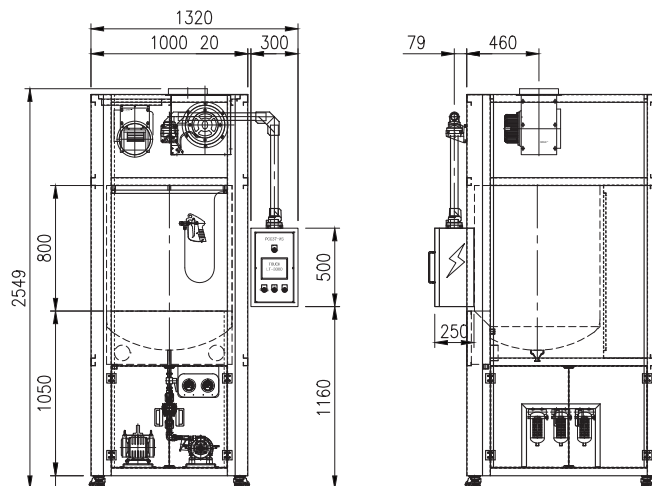
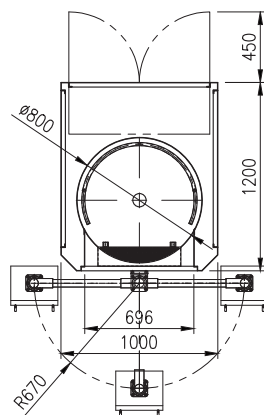
Auto Wall Wash



Touch Screen PLC 5" (5.7")

## Technical Specification Information

- Power Inputs: 220V 50 or 60 Hz, 1 or 3 Phase
- Power Consumption: 1.5 kW (~6A)
- Reservoir (solvent): 30 L (with fluid level Indicator)
- Spray Rinsing flow rate: 2.5 L/min (adjustable)
- Wall Wash flow rate: ~12 L/min (adjustable)
- Spray Rinse pressure: ~5 bar (adjustable)
- Wall Wash filter rating: 0.2  $\mu$ m +1  $\mu$ m  
2 stages absolute
- Dry weight: Approx. 450 kg
- Membrane Holder: 2 stages Cascade, 47 mm Dia.  
3 stages Cascade (option)
- Chemical Compatibility: Synthetic Hydrocarbon Washing Fluids
- Vacuum Pump: -0.6 ~ -0.8 bar.
- Ultrasonic bath: 40 kHz – 200 W max. (option)
- Effective efficiency: 20 W/L (option)



[General PCC37-XS Drawing]

## Ordering Information

Component Cleanliness Cabinet

PCC37-XS 1 2 3 4

Table 1: Option

Code	Description
T5	Touch Screen PLC-5" size
T7	Touch Screen PLC-7" size

Table 2: Option

Code	Description
US	Ultrasonic Bath
Omit	Pressure Rinse Type

Table 3: Option

Code	Description
2M	2Stages Cascade Membrane Holder
3M	3Stages Cascade Membrane Holder
4M	4Stages Cascade Membrane Holder

Table 4: Option

Code	Description
R	220V AC 60Hz 1Phase
W	220V AC 50Hz 1Phase
X	220V AC 50Hz 3Phase
V	200V AC 50Hz 3Phase



Pall Corporation

### Pall Machinery and Equipment

25 Harbor Park Drive  
Port Washington, NY 11050  
+1 516 484 3600 telephone  
+1 800 289 7255 toll free US

### Pall Korea Limited

968-5, 4F, Ildong Building, Daechi-Dong  
Gangnam-Gu, Seoul, Korea  
+82 2 560 7826, +82 2 560 8791  
+82 2 569 9092 fax



### Visit us on the Web at [www.pall.com](http://www.pall.com)

Pall Corporation has offices and plants throughout the world. For Pall representatives in your area, please go to [www.pall.com/contact](http://www.pall.com/contact)

Because of technological developments related to the products, systems, and/or services described herein, the data and procedures are subject to change without notice. Please consult your Pall representative or visit [www.pall.com](http://www.pall.com) to verify that this information remains valid.

© Copyright 2014, Pall Corporation. Pall, are trademarks of Pall Corporation.  
® Indicates a Pall trademark registered in the USA. *Filtration. Separation. Solution.<sup>sm</sup>* is a service mark of Pall Corporation.