

## Ultipleat® High Flow Filter For Etchant Applications

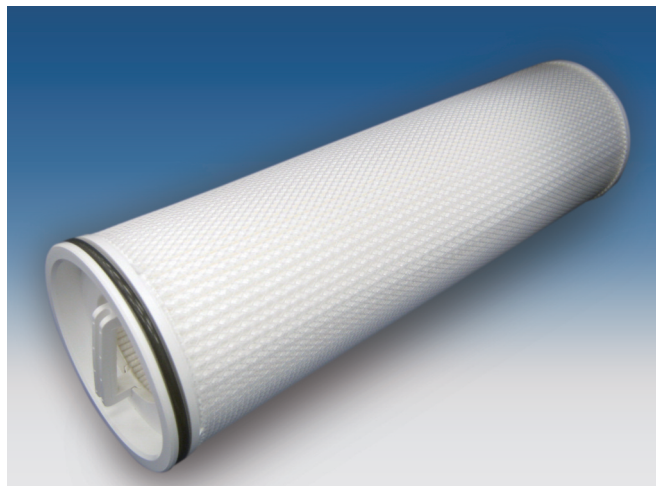
### Description

The Ultipleat High Flow Filter is designed for TFT LCD liquid applications, such as wet etching and cleaning. Its large diameter, inside out flow path and unique, high area pleated construction allow for a long service life.<sup>1</sup> The filter is very economical due to its high flow capacity. Far fewer filters are thus required, compared to standard size cartridges.

<sup>1</sup> Service life is dependent upon chemical compatibility and temperature.

### Features and Benefits

- Large filter diameter, 152 mm / 6.3 in. nominal, equates to fewer cartridges and smaller housing footprint
- Easy filter change-out
- 249 mm / 9.8 in. and 526 mm / 20.7 in. lengths available
- High area pleated construction for low differential pressure and high dirt capacity
- PTFE and ECTFE medium for excellent etchant compatibility
- Long service life
- Inside out flow pattern further enables high flow rates

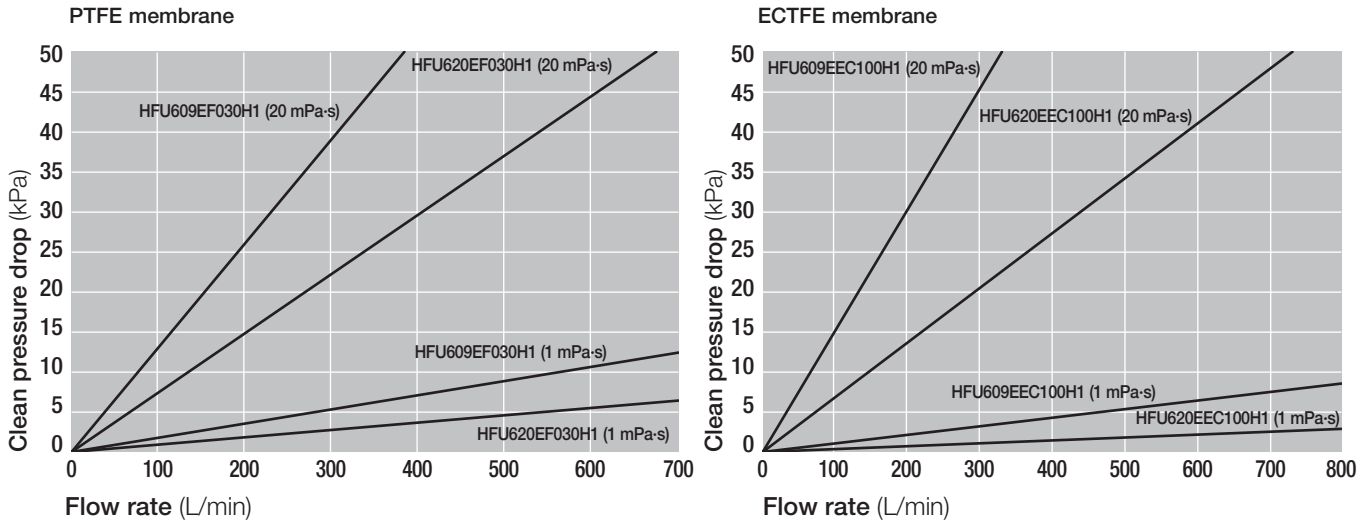


### Specifications

#### Materials of Construction

Components	Materials	
Filter medium	PTFE	ECTFE
Removal Rating	3 µm	10 µm
Support, drainage	Polypropylene	ECTFE
Outer Sleeve	Polypropylene	ECTFE
End caps	Polypropylene (glass fiber filled)	
O-ring	FEP encapsulated fluoroelastomer	
Maximum Operating Temperature	82 °C / 180 °F	
Maximum forward differential pressure	0.34 MPa @ 50 °C 50 psi @ 122 °F	
Housings	Ultipleat high flow plastic housing P/N: 1HFVW-09GF25H, 1HFVW-2GF41H (For availability of specific options and housing details, please contact your Pall Corporation representative.)	

# Pressure Drop vs. Liquid Flow Rate<sup>1</sup>



<sup>1</sup> For liquids with viscosity differing from water, multiply the pressure drop by the viscosity in millipascal-second.

Since etchants can vary significantly, it is recommended that the filter be tested for compatibility at the service temperature to ensure long service life.

## Part Numbers / Ordering Information

PTFE membrane

HFU6 1 EF030H1

ECTFE membrane

HFU6 1 EEC100H1

Table 1

Code	Length
09	249 mm / 9.8 in
20	526 mm / 20.7 in

Specifications and availability: The information provided in this literature was reviewed for accuracy at the time of publication. Product availability may be subject to change without notice. For current information, consult your local Pall distributor or contact Pall Corporation directly.



Pall Corporation

### Microelectronics

25 Harbor Park Drive  
 Port Washington, NY 11050  
 +1 800 360 7255 toll free US  
 +1 516 484 3600 telephone  
 +1 516 801 9711 fax  
 microelectronics@pall.com

### Nihon Pall Ltd.

6-5-1, Nishishinjuku,  
 Shinjuku-ku  
 Tokyo 163-1325 Japan  
 +81 3 6901 5700 telephone  
 +81 3 5322 2109 fax  
 http://www.pall.com/Japan/microe.asp

### Visit us on the Web at [www.pall.com/micro](http://www.pall.com/micro)

Pall Corporation has offices and plants throughout the world. For Pall representatives in your area, please go to [www.pall.com/corporate\\_contact.asp](http://www.pall.com/corporate_contact.asp).

Because of technological developments related to the products, systems, and/or services described herein, the data and procedures are subject to change without notice. Please consult your Pall representative or visit [www.pall.com](http://www.pall.com) to verify that this information remains valid. Products in this document may be covered by one or more of the following patent numbers: EP 667,800; EP 982,061; EP 1,380,331; US 5,543,047; US 5,690,765; US 5,725,784; US 6,113,784; US 7,083,564; US 7,318,800.

© Copyright 2015, Pall Corporation. Pall, , and Ultipleat are trademarks of Pall Corporation. ® Indicates a Pall trademark registered in the USA. Filtration. Separation. Solution.<sup>sm</sup> is a service mark of Pall Corporation.