

Description

The PumpKleen™ filter assembly offers superior protection for chemical pump systems. Designed for installation upstream of the pump, the PumpKleen protects critical pump components such as bellows and diaphragms by capturing broken wafer pieces and large particulate. The polarized fitting design provides easy installation into existing or new pump systems.

Features & Benefits

- Compact size
- Low differential pressure
- All fluoropolymer construction
- 3/4 in and 1 in flare style standard connections
- Excellent flow characteristics
- High temperature capabilities
- Large filtration area



Materials of Construction

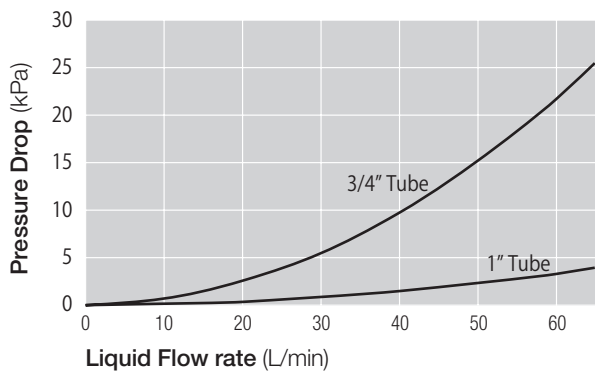
Components	Materials
Filter media	PFA
Support Core	PFA
Housing	PFA

Specifications

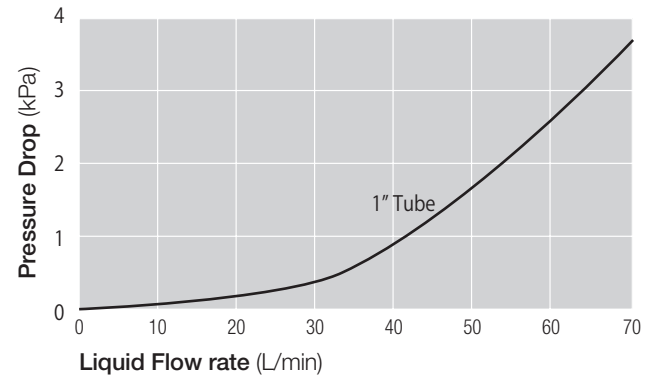
Removal ratings	60 (Mesh) : PKF1MF, PKF1FF 25 (Mesh) : PKF1MM
Filter area	50 cm ²
Maximum operating temperature	180 °C / 356 °F
Maximum operating pressure	0.4 MPaG @ 20 °C / 58 psig @ 68 °F 0.1 MPaG @ 180 °C / 14.5 psig @ 356 °F
Connections (Inlet / Outlet)	3/4 in Male / 3/4 in Female 1 in male / 1 in Female 3/4 in Tube / 3/4 in Tube

Typical Flow Characteristics – 1 cP fluid, 20 °C

PKF1MF/PKF1FF

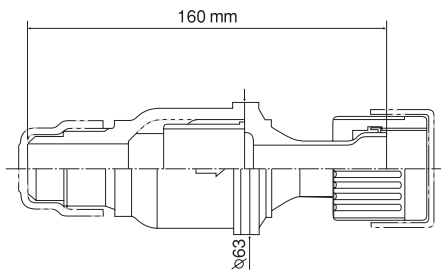


PKF1MM

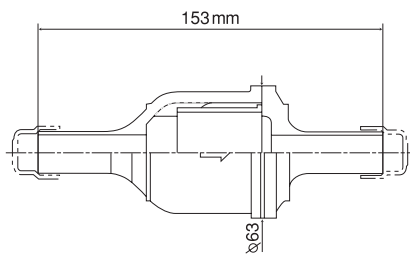


Dimensions

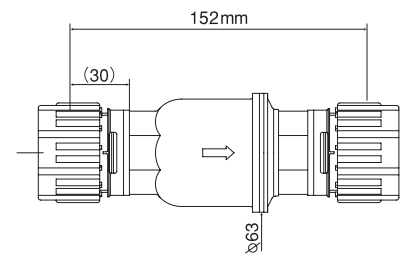
PKF1MF17E51



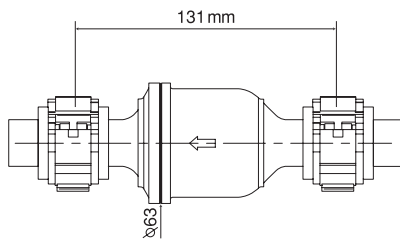
PKF1FF13E0



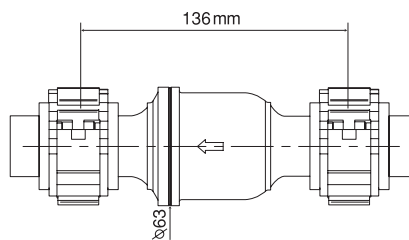
PKF1MM16E71



PKF1MM12E12



PKF1MM16E12



Part Numbers / Ordering Information

PKF1 **1** **2** E **3**

Table 1

Code	Inlet / Outlet
MF	Male / Female

Table 2

Code	Tube Size	L (mm)
13	3/4 in	140
17	1 in	160

Table 3

Code	Connections
0	Tube
2	Pillar ² Super
51	flare style

PKF1 **4** **5** E **6**

Table 4

Code	Inlet / Outlet
FF	Female / Female

Table 5

Code	Tube Size	L (mm)
13	3/4 in	153

Table 6

Code	Connections
0	Tube
2	Pillar Super
71	Pillar Super 300 P series

PKF1 **7** **8** E **9**

Table 7

Code	Inlet / Outlet
MM	Male / Male

Table 8

Code	Tube Size	L (mm)	Connections
12	3/4 in	131	Nanolink
	1 in	136	Nanolink
16	1 in	152	Pillar Super 300 P series Pillar Super 300 P series L Type

Table 9

Code	Connections
12	Nanolink
71	Pillar Super 300 P series
72	Pillar Super 300 P series L Type

¹ Pillar is a trademark of Pillar Packaging Co., LTD.

Representative example part numbers

PKF1MF13E51

PKF1MF17E51

PKF1FF13E0



Microelectronics

25 Harbor Park Drive
Port Washington, NY 11050
+1 516 484 3600 telephone
+1 800 360 7255 toll free US

Nihon Pall Ltd.

6-5-1, Nishishinjuku,
Shinjuku-ku
Tokyo 163-1325 Japan
+81 3 6901 5700 telephone
+81 3 5322 2109 fax

Visit us on the Web at www.pall.com/microelectronics
Contact us at www.pall.com/contact

Pall Corporation has offices and plants throughout the world. To locate the Pall office or distributor nearest you, visit www.pall.com/contact.

The information provided in this literature was reviewed for accuracy at the time of publication. Product data may be subject to change without notice. For current information consult your local Pall distributor or contact Pall directly.

IF APPLICABLE Please contact Pall Corporation to verify that the product conforms to your national legislation and/or regional regulatory requirements for water and food contact use.

© Copyright 2021, Pall Corporation. Pall, , and PhotoKleen are trademarks of Pall Corporation.
® Indicates a trademark registered in the USA.